



ADA Compliant

EVERSTEEL™



This Space for Architect/Engineer Approval

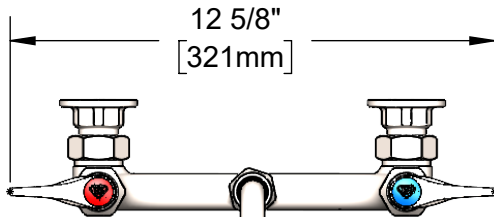
Job Name _____ Date _____

Model Specified _____ Quantity _____

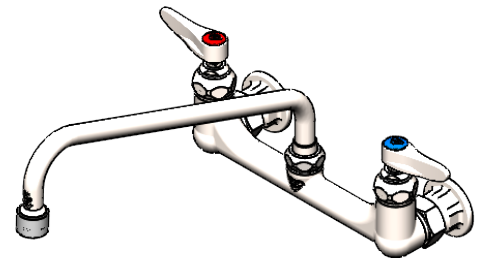
Customer/Wholesaler _____

Contractor _____

Architect/Engineer _____

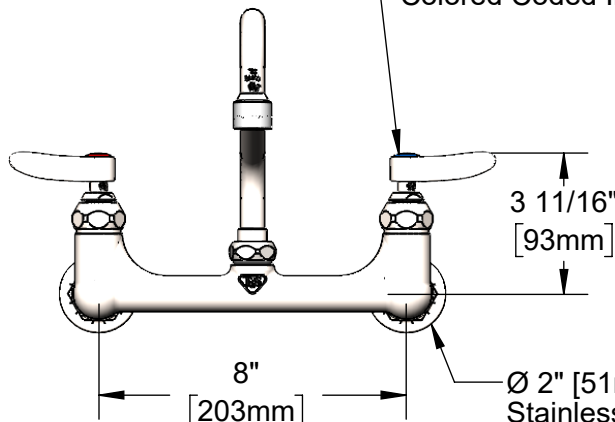


12 5/8"
[321mm]



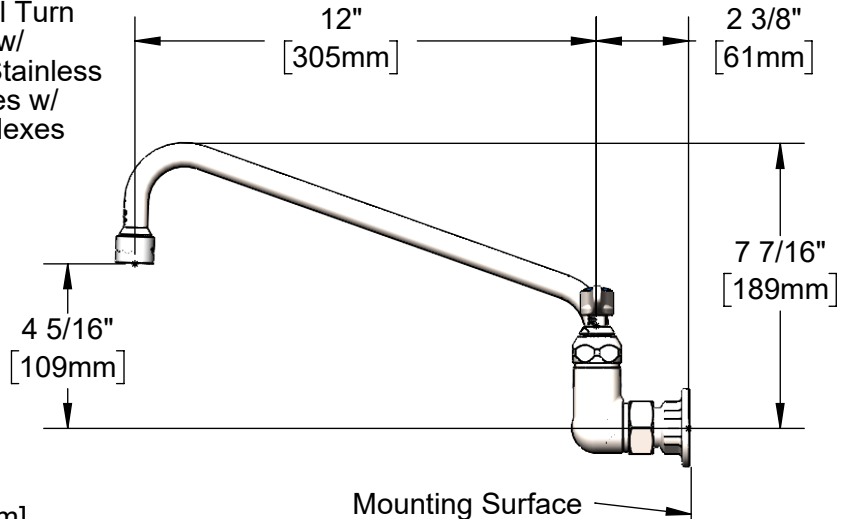
S062X-V20
Stainless Steel 12" Swing Nozzle
w/ 2.0 GPM [7.6 L/min] Vandal
Resistant Aerator. Converts to
Rigid w/ 014200-45 Lock Washer
(Included).

Stainless Steel Full Turn
Eterna Cartridges w/
Spring Checks & Stainless
Steel Lever Handles w/
Colored Coded Indexes

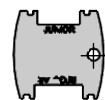


8"
[203mm]
Adjustable From
7 3/4" to 8 1/4"
[197mm to 210mm]

Ø 2" [51mm]
Stainless Steel
Flanges w/
G1/2 Female
Inlets



Mounting Surface



015425-45
Vandal Resistant Key
(Included)

Product Specifications:

8" Stainless Steel Wall Mount Mixing Faucet w/ SS Full Turn Eterna Cartridges w/ Spring Checks, SS Lever Handles, SS 12" Swing Nozzle w/ 2.0 GPM VR Aerator & SS G1/2 Female Inlets

Product Compliance:

ASME A112.18.1 / CSA B125.1
NSF 61 - Section 9
NSF 372 (Low Lead Content)
ANSI A117.1 (ADA)
AS/NZ WaterMark / WELS



T&S
Reward
Hospitality

T&S BRASS AND BRONZE WORKS, INC.

www.rewardhospitality.com.au

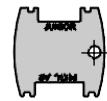
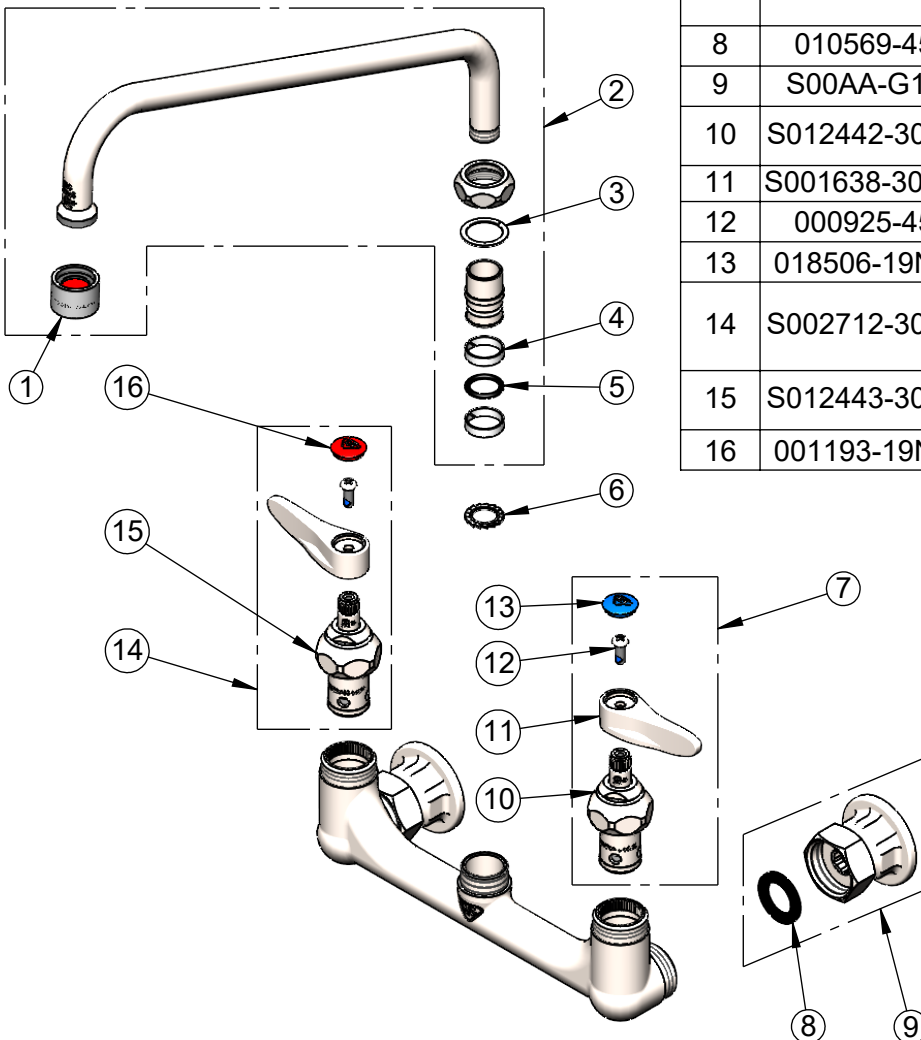
Model No.

AS-0231-V20-G

Item No.

4710003

ITEM NO.	SALES NO.	DESCRIPTION
1	S-0199-06-F20	VR 2.0 GPM [7.6 L/min] Aerator, 55/64-27 Female w/ Key
2	S062X-V20	Stainless Steel 12" Swing Nozzle w/ 2.0 GPM VR Aerator
3	009538-45	Swivel Washer
4	021087-45	Swivel Sleeves (2)
5	001074-45	O-Ring
6	014200-45	Star Washer, Anti-Rotation
7	S002711-30FT	Stainless Steel Full Turn Eterna Cartridge w/ Spring Check, Handle, Blue Index & Screw, LTC
8	010569-45	Washer, Inlet Flange Coupling (UK)
9	S00AA-G12	G1/2 Female Eccentric SS Flange
10	S012442-30FT	Stainless Steel Full Turn Eterna Cartridge w/ Spring Check, LTC
11	S001638-30NS	Lever Handle (New Style)
12	000925-45	Lab Handle Screw
13	018506-19NS	Blue Button Index, Press-in
14	S002712-30FT	Stainless Steel Full Turn Eterna Cartridge w/ Spring Check, Handle, Red Index & Screw, RTC
15	S012443-30FT	Stainless Steel Full Turn Eterna Cartridge w/ Spring Check, RTC
16	001193-19NS	Red Button Index, Press-in



015425-45
Vandal Resistant Key
(Included)

Product Specifications:

8" Stainless Steel Wall Mount Mixing Faucet w/ SS Full Turn Eterna Cartridges w/ Spring Checks, SS Lever Handles, SS 12" Swing Nozzle w/ 2.0 GPM VR Aerator & SS G1/2 Female Inlets

Product Compliance:

ASME A112.18.1 / CSA B125.1
NSF 61 - Section 9
NSF 372 (Low Lead Content)
ANSI A117.1 (ADA)
AS/NZ WaterMark / WELS